

# SD-WAN NETWORKS ARE CHANGING. YOUR NETWORK MANAGEMENT NEEDS TO CHANGE WITH THEM.

The next evolution for your business:  
cost-effective, flexible, consistently  
high-performance software  
defined networking



# WHY SD-WAN?



## THE CHALLENGE

**Wide area networks (WAN's) have evolved to the point that majority of traffic is directed to the Internet. And networks are changing...**

With mobile, server virtualization, and cloud services all shifting the way we work, enterprises with global presence are encountering three common challenges:

- ✓ Coping with higher bandwidth demands
- ✓ Impaired cloud connectivity
- ✓ Effective management of costs

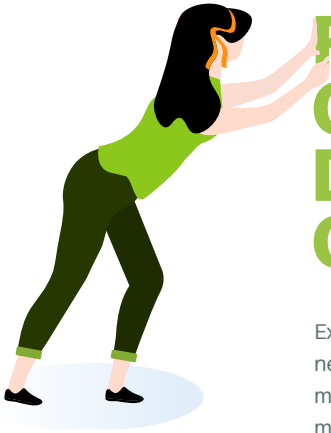
Standard WAN architecture based on older, legacy technologies can prove a barrier to overcoming these issues. An outdated WAN can hold back your business and prevent it from delivering the optimal user experience for modern business applications.

## THE SOLUTION

**Implementing a software defined wide area network (SD-WAN) can help your business to deliver an efficient, optimised, and cost-efficient network that drives your business forward.**

Don't stay locked into the static and complex architecture of traditional networks. Try a new approach to network management that offers flexibility and easy troubleshooting. Expereo provides global, end-to-end SD-WAN lifecycle management based on decades of experience with Internet connectivity...





# REMOVE COMPLEXITY, DELIVER CLARITY

Expereo SD-WAN Management is a fully managed virtual private network service that brings together the components from multiple SD-WAN vendors, with global deployment and change management services, plus the benefits of SD-WAN's real time site traffic control and optimisation, with a comprehensive reporting and visibility layer.

Visualise and manage your application performance across your SD-WAN and deploy complex features such as Certificate Authorities and performance-based routing policies in minutes rather than days.

## EXPEREO SD-WAN SERVICES



### Field Services

We can deploy and install SD-WAN capable hardware to your sites in 180+ countries at lower cost than doing it yourself, with the added benefit of a single Expereo invoice for global services.



### Global Internet

Scalable dedicated and broadband Internet services for SD-WAN access to your Cloud applications and data everywhere you need it, with 24/7 proactive global NOC support.



### Network Design

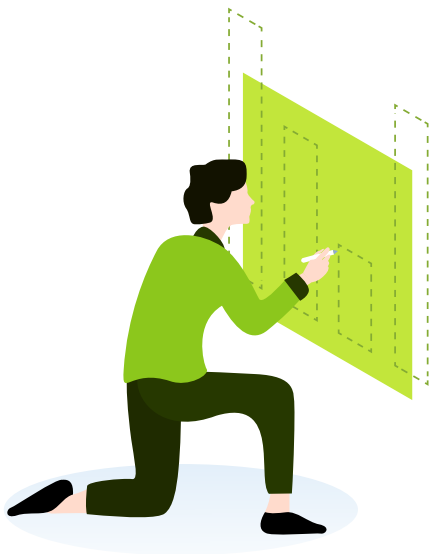
Expereo is a single global provider for your complete network lifecycle - connectivity, design, consultancy, deployment, field services, management, support and billing in 180+ countries.



### Reporting

Orchestration, reporting and monitoring capabilities give you the benefits you expect from SD-WAN, removing complexity with the added convenience of managed services.

# THE BENEFITS OF SD-WAN



- ✓ **Reduce costs**  
Utilise Internet bandwidth, reduce OPEX with centralised resources and CAPEX with Expereo equipment services
- ✓ **Network Management**  
Easily deploy and manage SLA-based policies for every application in use, plus Certificate Authorities
- ✓ **Increase business agility**  
Faster deployment and integration of new branch offices with centrally managed services and policies
- ✓ **Cloud optimisation**  
Application performance monitoring and routing improves SaaS workload performance across all offices
- ✓ **Improve Network Performance**  
Utilize multiple links with active-active capability and performance based routing for increased performance
- ✓ **Security**  
With greater network control, segmented security policies and increased security measures are simpler to deploy

## LET'S DISCUSS THE POSSIBILITIES TOGETHER

With our proven record, we know SD-WAN can help your company stay connected. Get in touch with one of our locations or just give our team a call on ...

