



expereo.one

All your network and applications performance
in a single place and in real time

The first digital platform that enables you to have complete control, from sourcing to billing.

Our new platform captures all underlay and overlay key metrics to deliver every advantage for businesses

Expereo.one provides you with:

- ✓ Real-time overview of your network
- ✓ Statistics on the performance of your Underlay and Overlay
- ✓ Optimization Analytics
- ✓ Self-service features on the roadmap for 2020



Let your team spend time on what really matters

To learn more, visit www.expereo.com/one



DASHBOARD

Network overview at a glance

Orders Overview

- Filter on RFS or in Delivery
- Order details
- Troubleshooting

Support

- Trouble Case & communication
- Maintenance Upgrades & affected orders

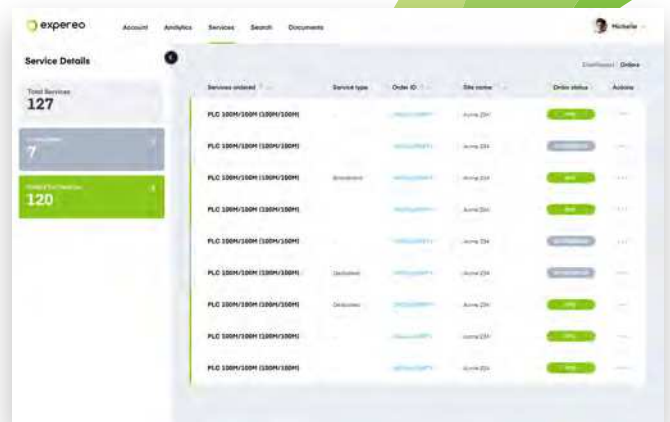
Customer Locations

- Node Status
- Full inventory management

SERVICE OVERVIEW

Real Time Inventory

- View a list of all your orders
- Filter by: RFS, In Delivery
- Troubleshoot on Orders in RFS
- View Order details



ANALYTICS

Live data for all services

Global Internet

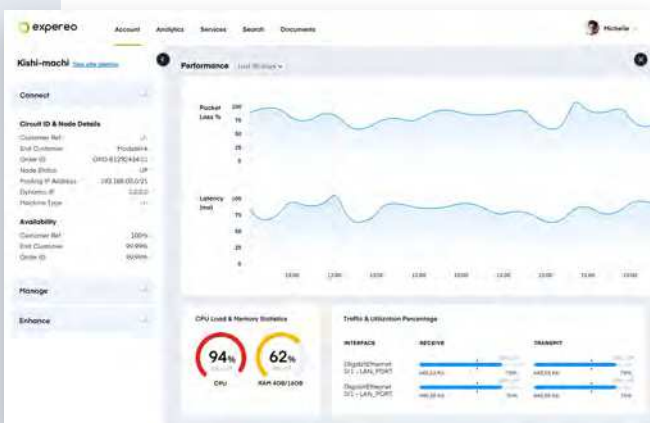
- Performance overview
- Traffic Utilization / CPU / Memory / Availability

Cloud Acceleration

- Smart routing / Optimized traffic
- Packet loss / Latency

SD-WAN

- Application based performance
- Traffic Utilization / Packet loss / Latency / Jitter



Let your team spend time on what really matters

To learn more, visit www.expereo.com/one