



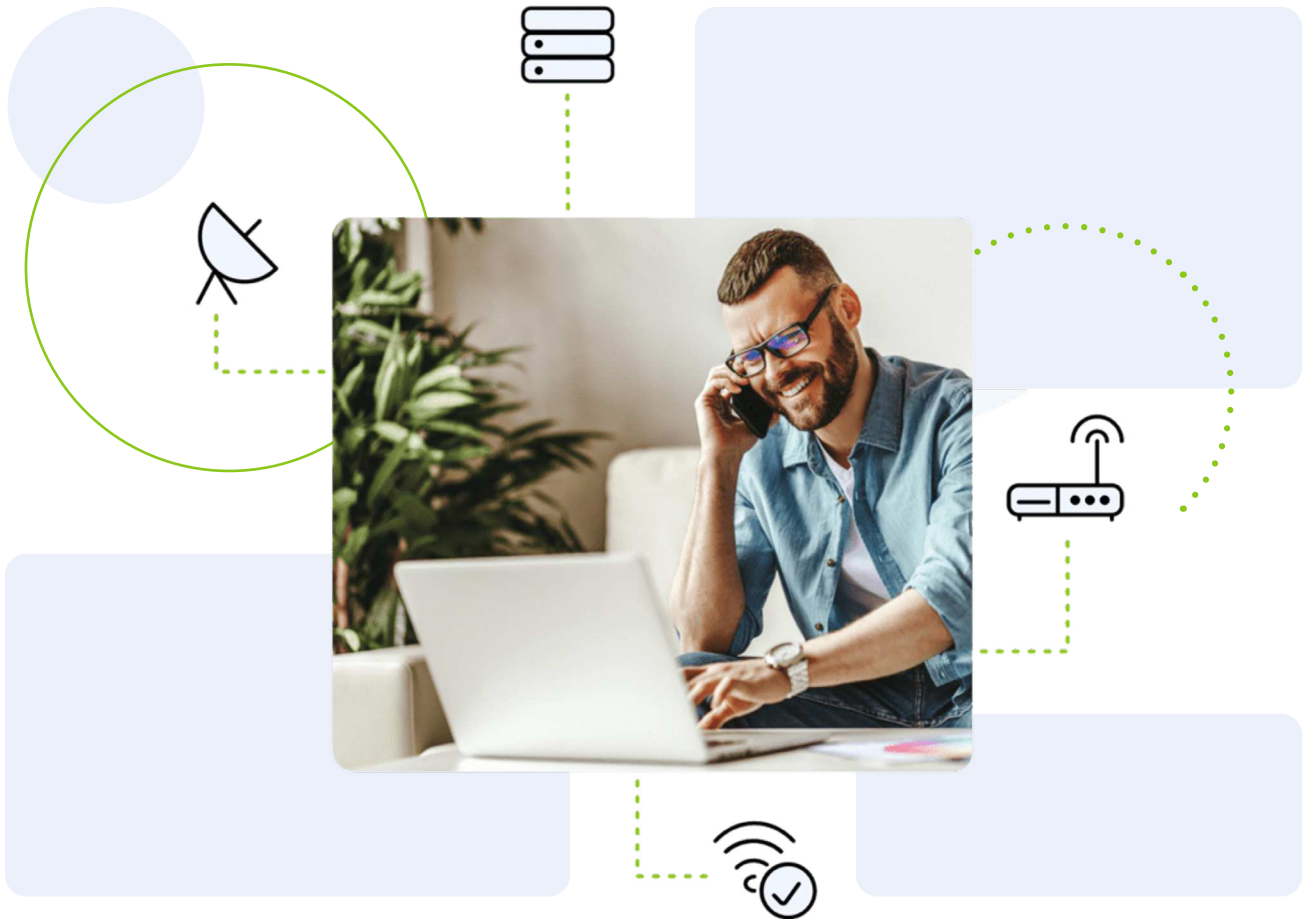
Network Business Continuity.

A robust business continuity plan allows organizations to maintain their essential functions – the kind employees and customers rely on.

With Expereo's Network Business Continuity solution, you can rest assured that connection failures and any other issues won't be allowed to disrupt your critical processes, with any service degradation fixed in a timely manner.

www.expereo.com

The cause of disruption is not always easy to identify



Poor visibility

Many customers find that not all network traffic is visible with their current solution, as it requires investment in hardware and/or software to track. Additionally, they may need to allocate an IT team to keep manage traffic and take action.



High risk of failure

When an enterprise picks its own ISP, there's no way to ensure it has good connectivity. Without provider-neutral support, it is difficult to assess the competition and find a local ISP with the best connectivity at the best price.



Lacking diversity

Customers need to build diversity for their sites in case their fixed internet breaks down. Even with two different ISPs, it can be complicated for enterprises to ensure a good level of diversity for each of their sites. They need local knowledge and resources to check.

Be ready for whatever might happen



Network issues can occur at a variety of different levels. Failure points stemming from your physical network hardware or the infrastructure operated by your local ISP can prove hugely disruptive. At the same time, Customer Premises Equipment (CPE) at one of your sites could experience an issue or internet traffic congestion could cause significant downtime.

Expereo's Network Business Continuity solution guards against this kind of disruption by offering several essential services. With Fixed Internet, we build true network diversity by combining carrier diversity, technology diversity, and local loop diversity. Our Mobile Internet offering also provides network redundancy that works perfectly as an internet failover option in the event of disruption to primary services. And we always have equipment maintenance on hand

to replace faulty devices by the next business day. We have local installer partners to act as IT support for this replacement service.

Our other services will similarly help you keep core processes running. Expereo SD-WAN allows you to use both underlays in either an active-active configuration or retain one for failover. Expereo Cloud Acceleration helps you avoid internet congestion by optimizing your network traffic, and finally, Expereo Managed Services monitors your network 24/7 and provides automated fault management.

**Say goodbye to
network disruption**

Keep your business running



Prioritize your applications

Although it's important to minimize downtime across all our customer's processes, critical applications need higher levels of availability. With Expereo Smart Edge, network administrators can gain better traffic visibility and easier configuration management to ensure certain applications are always available.



Acceleration as standard

Expereo has developed an in-house software-defined solution to optimize BGP routing performance by overriding standard BGP decisions. Our Cloud Acceleration service gives customers assurance that traffic from their network edge will reach the public cloud via the most optimal path – delivering the best performance at the best possible price.



Mobile broadband backup

Our mobile internet service helps customers build diversity for their sites, providing them with a backup internet failover solution. When your primary line breaks down, our LTE internet failover means you can stay connected to your assets at all times.



Managed services

With Expereo's Network Business Continuity solution, your network is monitored 24/7 with event-driven automation instantly flagging up any potential disruption before your employees and customers are affected. With our support, you can enjoy business continuity, without the administrative burden.



Full path diversity

With Expereo, customers can build their network on the most diverse network possible by combining different ISPs, last-mile options, and local loop technologies. Our complete end-to-end diversity offering means that network resilience is guaranteed.

Learn more about our managed SD-WAN and SASE solutions.

CONTACT US